

PolyCera® HYDRO Ultrafiltration

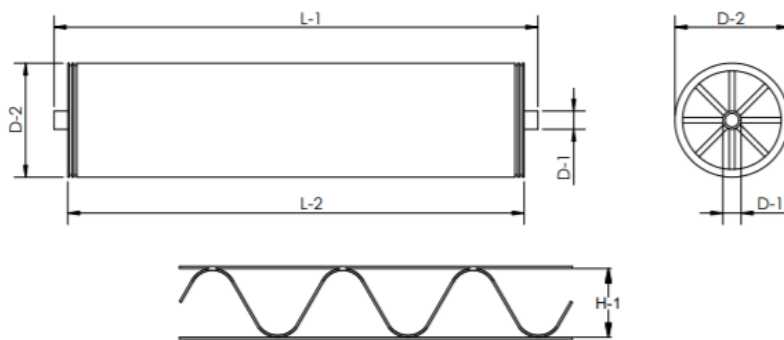


HYDRO-UF-10-40

Performance & Operating Parameters		Cleaning & Chemical Exposure Guidelines	
Membrane Material	Hydro	Max Backwash Pressure	1.7 bar
Nominal Pore Size/MWCO	2 nm/10 kDa	Backwash Flux	40 - 150LMH
Operating pH Range	1 – 13.5	Standard Backwash Duration	30 seconds
Operating Temperature Range	1 < pH < 13.5 @ 50°C 1 < pH < 9.0 @ 70°C	Max Backwash Duration	120 seconds
Max Inlet Pressure	6.0 bar	Max Cleaning Temperature	≤ 70°C
Max Pressure Drop Per Element	0.35 bar	Max Cleaning pH	1 – 13.5
*Max Free Oil & Grease	≤150 mg/L	Hydrochloric Acid	≤0.4% (pH > 1.0)
*Max Total Suspended Solids	≤1500 mg/L	Citric Acid	≤20% (pH > 1.0)
Continuous Free Chlorine	≤5.0 mg/L	Sodium Hydroxide	≤1% (pH < 13.5)
Typical Operating Flux	40 - 200LMH	Free Chlorine Instantaneous/Total	100 ppm/300,000 ppm hour @ pH 11
Recommended Pre-Filter	300 µm	Peroxide/Ozone	Not compatible
Notes	Increased crossflow during backwash enhances cleaning efficacy; Backwash flux should be 1.5 to 2 times of operating flux ; *Max Free Oil & Grease/ Max Total Suspended Solids means the max concentration at concentration side. It's dependent on raw feed water quality and design recovery rate.		

Elements

Model	Hydro-UF-10-40-4040	Hydro-UF-10-40-8040
Filter Area m2 (ft2)	5.5 (59.2)	23.6 (254.0)
Weight kg (lbs)	3.5 (7.7)	13.0 (28.7)
Outer Wrap	Tape/FRP	FRP
Endcap	Male	Female
Recommend crossflow (m3/h)	5.7	34.1
Filtrate flowrate (m3/h)	0.75	3.2
Permeate connection D-1 cm(in)	1.90 (0.75)	2.86 (1.125)
Element diameter D-2 cm(in)	9.9(3.9)	20.1(7.9)
Element length (male) L-1 cm(in)	101.6 (40.00)	N/A
Element length(female) L-2 cm(in)	96.1 (37.93)	101.6 (40.00)
Feed Spacer Size H-1 mm(mil)	1.02 (40)	1.02 (40)
Notes	*Testing condition: de-ionized water, 25°C, 1.7 bar (25 psi) transmembrane pressure Actual results will vary depending on feed water quality and operation conditions **All element dimensions have specified tolerances of +0.00/-0.06"	



Handling & Storage Instructions

New Element Handling & Storage Guidelines

- Recommended storage temperature: $\geq 5^{\circ}\text{C}$ (41°F). Do not freeze element.
- Handle with care. Damage to elements/end-caps/ATDs can compromise performance.
- It is recommended to store elements wet and horizontally.
- Whenever possible, store elements in original packaging.
- Drying can damage membrane surface and compromise performance.
- Membrane elements should be stored in dry, dark, and ventilated environmental conditions.

Installation & Initial Use Guidelines

- Prior to use, soak element for 24 hours with portable water then flush for at least 30 minutes.
- Elements can be mounted vertically or horizontally.
- Use water or glycerin to lubricate seal.

After Use Storage & Preservation Guidelines

Use standard CIP procedure to clean feed and filtrate from the elements prior to shut down. Then perform element preservation as recommended below:

- 1–7 days: Sanitize element by flushing with 10 ppm bleach and adjust to pH 11 for 30 minutes. Fill up element and housing with fresh 1 ppm bleach solution, seal the housing and store.
- 1 week to 6 months: Fill up element and housing with 0.3% Saniclean* solution, seal the housing and store. Every four weeks drain the Saniclean solution from the system and flush with clean water. Refill the element and housing with 0.3 % Saniclean solution, seal the housing and store. If Saniclean solution is not available, use 0.2% sodium azide solution or 45% glycerin solution instead.
- More than 6 months: Please Contact PSP.US, Inc. for further information.

*Saniclean is a USDA accepted, low-foaming acid anionic rinse product made by Five Star Chemicals & Supplies, Inc. (Colorado, USA).

PSP.US, Inc.

721 S Glasgow Ave.
Unit D
Los Angeles, CA 90301

E: info@polycera.com

HYDRO-UF-10-40

PolyCera

www.polyceramembranes.com

© 2020 PSP.US, Inc. All rights reserved.